

E 1/2 OF SE 1/4 OF SEC 33 T21N R5E M.D.B. & M. 62-69

1" = 200'

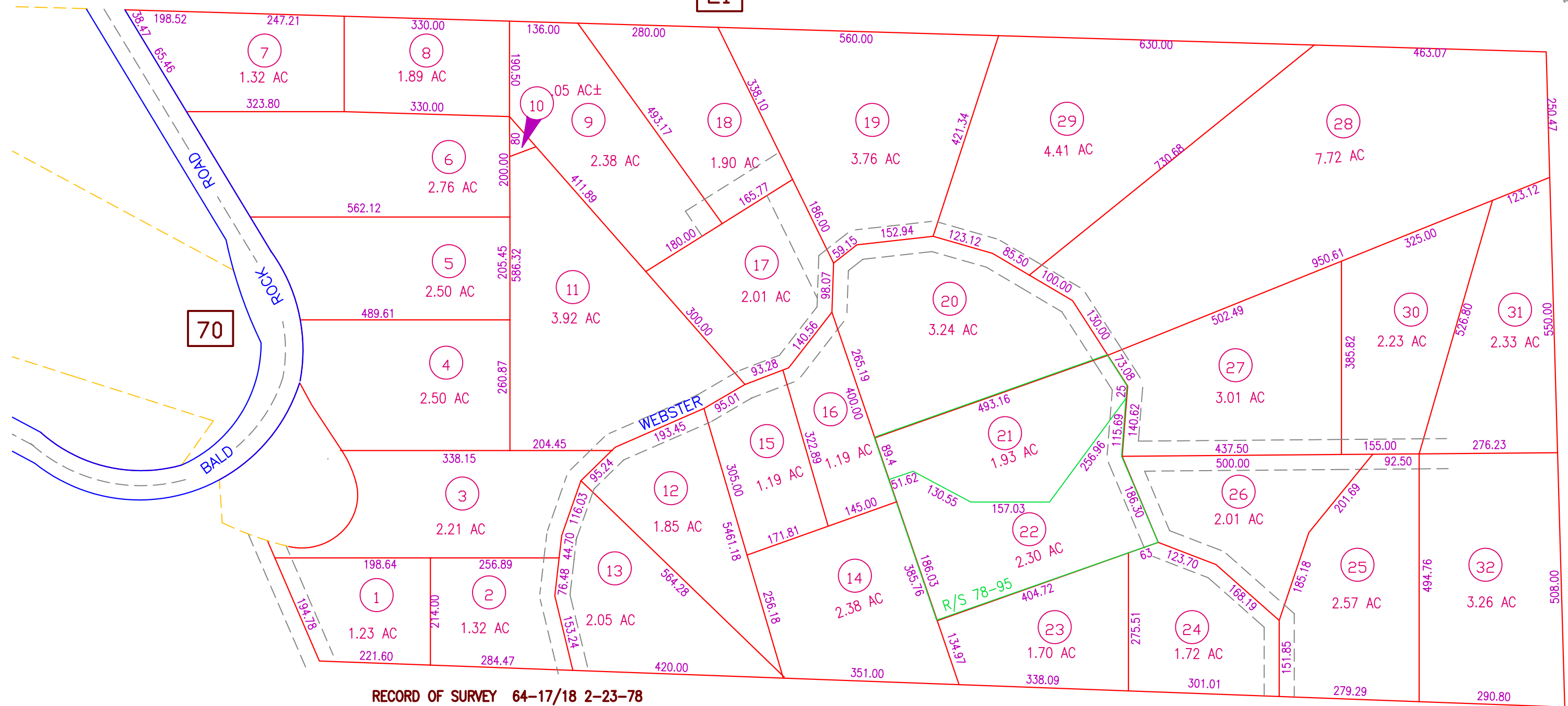


21

71-01

70

68



RECORD OF SURVEY 64-17/18 2-23-78

NOTE: These parcels are for assessment purposes only and may not constitute legal parcels.

Assessor's Map No. 62-69  
County of Butte, Calif.

REVISED: 10-97